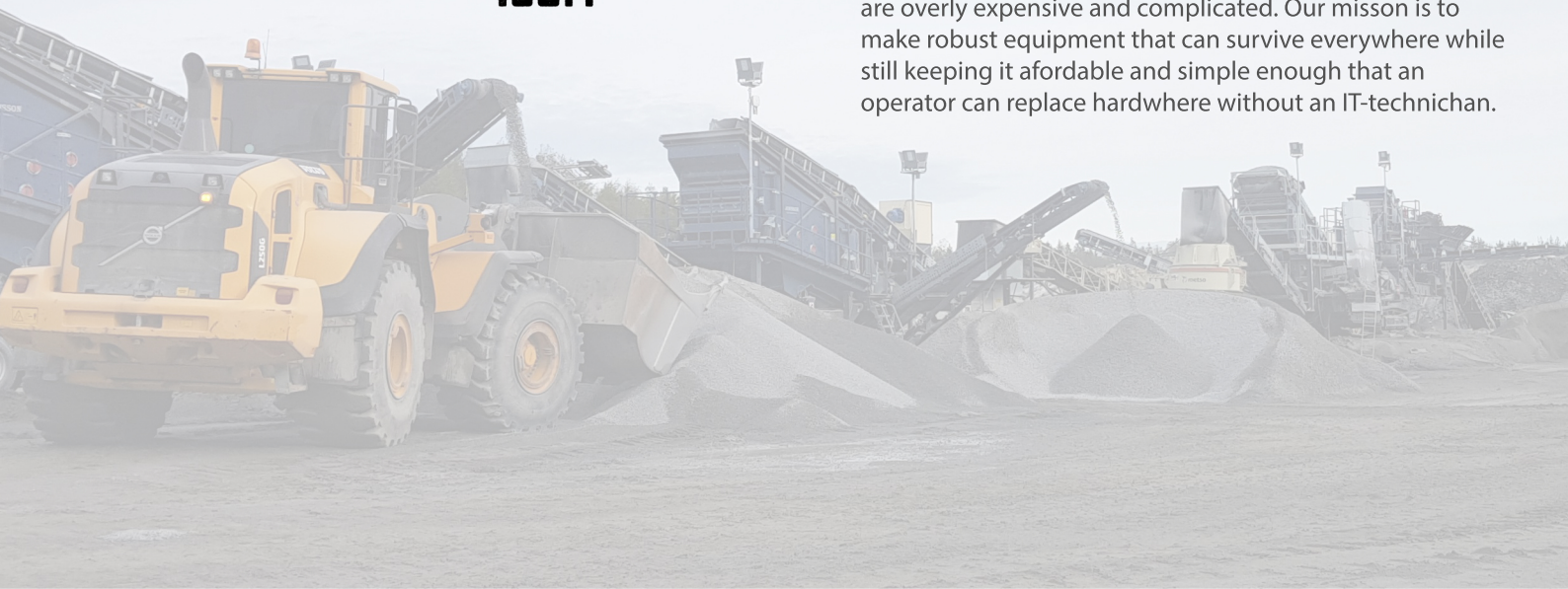
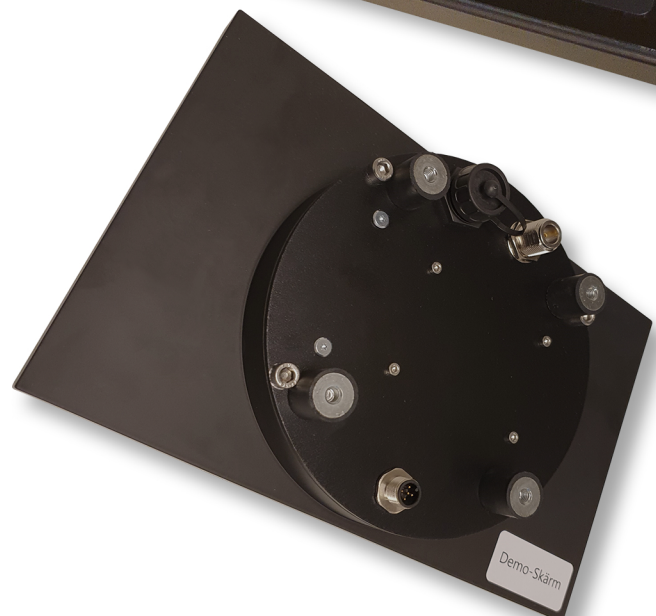


There are plenty of rugged equipment out there but they are overly expensive and complicated. Our mission is to make robust equipment that can survive everywhere while still keeping it affordable and simple enough that an operator can replace hardware without an IT-technician.



RUGGED 11,6" VEHICLE-MOUNT COMPUTER

Robust all metal housing that is still light enough to use with suction cup mount on the window.
No fuss with docks that malfunction, only robust M12 and N-Male connectors.
Really awesome screen with 1920x1080 resolution
IPS display with the proven Rock touch technology.





Specifications

Computer

Processor

Intel N4200 Passive

Memory

Standard 4GB (Option 8GB)

Storage

M.2 64GB (Option 32GB,128GB)

Interfaces

Input/Outputs

1xM12 5-Pin Power 9-36V

1xUSB-A with dustcap

1xN-Male antenna

Connectivity

Radio

Dualband WLAN 2.4GHz 802.11

(Option) WLAN 5GHz

(Option) GPS

(Option) 4G LTE

Included antennas:

1xWLAN N-Male 5dbi foldable antenna

1xWLAN N-Male 5dbi magnet roof antenna

1xWLAN Internal 3dbi antenna

Software

Operating system

Windows IoT 10 LTSC/LTSC

Power

Input

9-36V on M12 5-pin connector

Power consumption

20Watt

Physical characteristics:

Dimensions

285mm (w) x 180mm (h) x 50mm/70mm w. mount (d)

Weight

1,9kg

Environment

Operating temperatures

-30° to 55° C

Humidity

10-95% RH

IP-Class

IP65